

INCH-POUND

A-A-55624
11 March 1997
SUPERSEDING
MS18212D
7 January 1994

COMMERCIAL ITEM DESCRIPTION

SCREW, MACHINE, PAN HEAD, SLOTTED, PLASTIC (NYLON), UNC-2A

The General Services Administration has authorized the use of this Commercial Item Description for all Federal Agencies.

1. Scope. This Commercial Item Description (CID) depicts the requirements for UNC-2A thread, plastic-nylon, slotted, pan head machine screws.

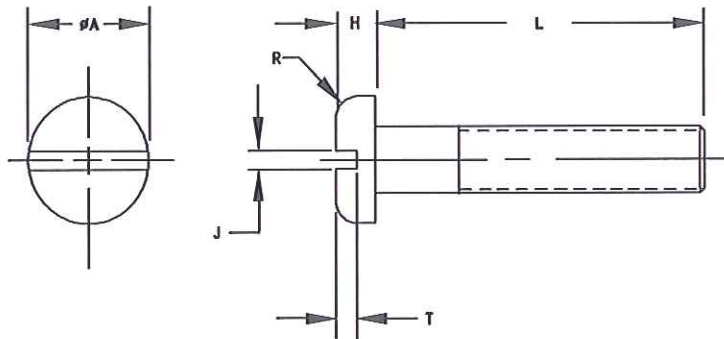
2. Salient characteristics.

2.1 Material shall be plastic-nylon in accordance with ASTM D4066, Group 01, Class 1, Grade 1.

2.2 Threads shall be in accordance with ASME B1.1. Acceptable screw threads are those which can be threaded by hand with a nut to at least two fully formed threads closest to the screw's head. The nut shall be fully ferrous, hexagon type, UNC-2B, conforming dimensionally to ASME B18.6.3.

2.3 Screws up to and including 2.000 inches in length shall have full form threads extending to within two threads of the bearing surface of the head or closer if practicable. Screws over 2.000 inches in length shall have a minimum full form thread length of 1.750 inch.

2.4 All tolerances, unless otherwise specified, shall be ± 0.005 for 3 place decimals.



BENEFICIAL COMMENTS, (RECOMMENDATIONS, ADDITIONS, DELETIONS, CLARIFICATIONS, ETC., AND DATA WHICH MAY IMPROVE THIS DOCUMENT SHOULD BE SENT TO: DEFENSE INDUSTRIAL SUPPLY CENTER, ATTN: DISC-ECC, 700 ROBBINS AVENUE, PHILADELPHIA, PA. 19111-5096.

ASMC N/A

1 OF 4

FSC 5305

DISTRIBUTION STATEMENT A. APPROVED FOR PUBLIC RELEASE; DISTRIBUTION IS UNLIMITED.

TABLE I. DASH NUMBERS AND DIMENSIONS

NOMINAL SIZE	.086 (NO.2)	.112 (NO.4)	.138 (NO.6)	.164 (NO.8)	.190 (NO.10)	.250 (1/4)	.375 (3/8)	
THREAD CLASS	56 UNC-2A	40 UNC-2A	32 UNC-2A	32 UNC-2A	24 UNC-2A	20 UNC-2A	16 UNC-2A	
ØA HEAD	.160	.210	.265	.320	.365	.475	.740	
H HEAD HEIGHT	.050	.065	.075	.080	.110	.160	.212	
J SLOT WIDTH	.028	.035	.045	.050	.055	.070	.088	
T SLOT DEPTH	.025	.035	.045	.050	.060	.085	.112	
R HEAD RADIUS MAX	.035	.042	.046	.052	.061	.087	.143	
L LENGTH	TOL	DASH NUMBERS						
.125	±.015	1	21	41*	61			
.188		2	22	42	62*	82		
.250		3	23	43	63	83		
.312		4	24	44	64	84	104	
.375		5	25	45	65	85	105	125
.438		6	26	46	66	86*	106*	
.500		7	27	47	67	87	107	127
.625		8	28	48	68	88	108	128
.750		9	29	49	69	89	109	129
.875		10*	30*	50	70*	90*	110*	
1.000			31	51	71	91	111	131
1.125			32	52	72	92	112	132
1.250			33	53	73	93	113	133
1.500			34	54	74	94	114	134
1.750				55	75	95	115	135
2.000				56	76	96	116	136
2.250					77	97	117	
2.500					78*	98	118	138
2.750					79*	99*	119*	
3.000				80*	100*	120	140	

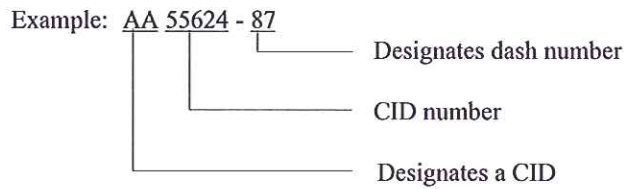
*- INACTIVE FOR NEW DESIGN

3. Quality Conformance Provisions.

- 3.1 The suppliers shall be responsible for those in process controls and inspections necessary to supply a product consistently conforming to the requirements of this document.
- 3.2 Upon request, the suppliers will certify with documented test/inspection evidence, that the part supplied meets the requirements of this document.

4. Notes:

- 4.1 All dimensions are in inches.
- 4.2 Interpret drawing in accordance with ASME Y14.5M.
- 4.3 The gate vestige shall be limited to .025 max and shall not be included in any tolerance.
- 4.4 The part identification number (pin) shall consist of the basic CID number followed by a dash number from Table I.



AA55624 - 87 = indicates UNC-2A thread, plastic -nylon, slotted, pan head machine screw, .190 inch nominal diameter, .500 inch long.

- 4.5 Preservation, packing, and marking shall be as specified in the contract or order.

TABLE II. SUPERSESSION TABLE

MILITARY PIN MS18212	REPLACEMENT CID PIN AA55624	MILITARY PIN MS18212	REPLACEMENT CID PIN AA55624	MILITARY PIN MS18212	REPLACEMENT CID PIN AA55624	MILITARY PIN MS18212	REPLACEMENT CID PIN AA55624
-1	-1	-26	-43	-51	-74	-77	-105
-2	-2	-27	-44	-52	-75	-78	-106
-3	-3	-28	-45	-53	-76	-79	-107
-4	-4	-29	-46	-54	-77	-80	-108
-5	-5	-30	-47	-55	-78	-81	-109
-6	-6	-31	-48	-56	-79	-82	-110
-7	-7	-32	-49	-57	-80	-83	-111
-8	-8	-33	-50	-58	-82	-84	-113
-9	-9	-34	-51	-59	-83	-85	-114
-10	-10	-35	-53	-60	-84	-86	-115
-11	-21	-36	-54	-61	-85	-87	-116
-12	-22	-37	-55	-62	-86	-88	-117
-13	-23	-38	-56	-63	-87	-89	-118
-14	-24	-39	-61	-64	-88	-90	-119
-15	-25	-40	-62	-65	-89	-91	-120
-16	-26	-41	-63	-66	-90	-92	-125
-17	-27	-42	-64	-67	-91	-93	-127
-18	-28	-43	-65	-68	-93	-94	-128
-19	-29	-44	-66	-69	-94	-95	-129
-20	-30	-45	-67	-70	-95	-96	-131
-21	-31	-46	-68	-71	-96	-97	-133
-22	-33	-47	69	-72	-97	-98	-134
-23	-34	-48	-70	-73	-98	-99	-135
-24	-41	-49	-71	-74	-99	-100	-136
-25	-42	-50	-73	-75	-100	-101	-137
				-76	-104	-102	-138

Military Interests:

Custodians:

Army-AT,AV,MI
2187)

Navy-AS,MC,OS
Air Force-82

Reviewer:

Army-AR
Navy-SH
Air Force-99

Preparing Activity:
DLA-IS

(Project 5305-